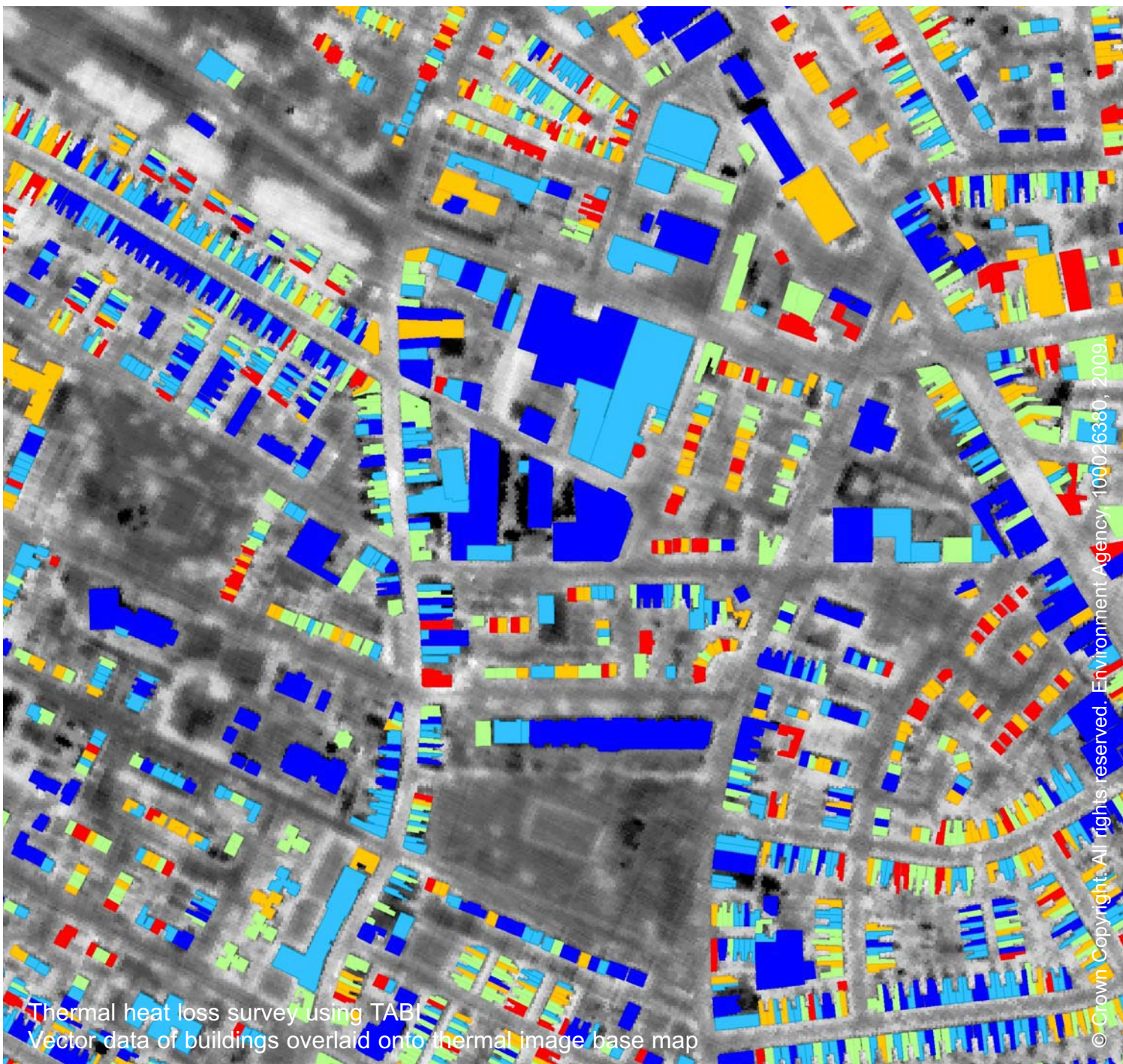


Thermal heat loss surveying



© Crown Copyright. All rights reserved. Environment Agency, 100026380, 2009.

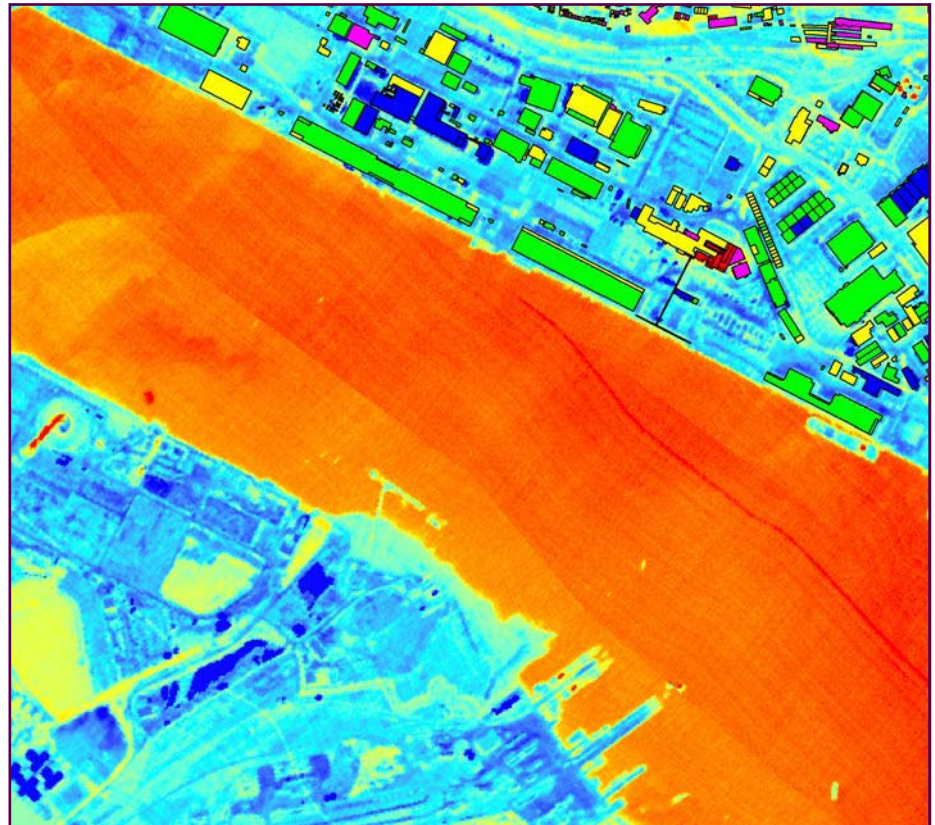
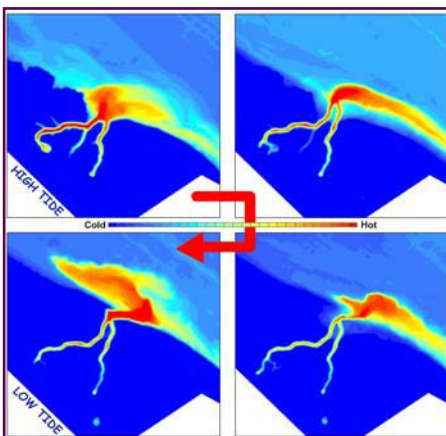
Climate change and energy efficiency are high on the political agenda. Whether buildings are domestic or commercial, heat wasted through poor insulation is a local problem that has a global impact.

Having a clear idea of where to target energy efficiency improvements is vital. Geomatics Group has developed a fully automated system for calculating relative heat loss from individual building roof tops using our integrated aerial surveillance system.

Using the Thermal Airborne Imager™ (TABI) both urban and rural areas can be surveyed quickly and cost effectively. Our automated referencing systems give unsurpassed precision, meaning that imagery can be seamlessly matched up to individual buildings located on OS Mastermap™. Statistics of the temperature values within each building polygon, are used to assign each address and out-building with an indicative heat loss rating.

This powerful tool, makes it easy to monitor heat loss from properties and develop targeted energy efficiency plans and can be used by local authorities to help monitor carbon emissions for NI186.

The imager can also be used for environmental monitoring to detect industrial thermal discharge into watercourses, oil spillage and heat



Thermal heat loss survey using TABI
Southampton Docks

anomalies on landfill sites.

Features & Benefits

- Precision automated ortho-correction for reliable address-referencing
- Fully automated methodology for rapid turn around times
- Measure relative heat loss differences to an accuracy of 0.1°C
- Surveys carried out at night during winter months to obtain the most accurate data
- Delivery of map-ready data in a variety of GIS formats
- Delivered on a web-based server for self-assessment either as a GIS layer or as a fully searchable database

- Every building assigned an indicative heat loss rating
- Tailored surveys available to cover your precise geographical area

Applications

For both commercial and public sector, this process offers the precision required to better target heat loss.

- Local authority energy awareness campaigns
- Climate change planning
- Building heat loss measurement
- Commercial energy loss audits
- Energy conservation programmes
- Landfill site surveys
- Pipeline heat loss analysis
- Industrial thermal discharge analysis

Geomatics Group is a leading provider of high quality survey solutions. As a specialist business unit within the Environment Agency, we deliver integrated spatial data products to government and commercial clients. Combining cutting edge technology with expert personnel, we work to the highest scientific and ethical standards to provide accurate and high quality spatial data.

